



# dentalvibe

Ultimate Injection Comfort

## USER MANUAL

Injection Technique: Page 8

**Less Anxiety.  
More Comfort.**  
Spread your good name.

## TABLE OF CONTENTS

Get to know your <b>DentalVibe®</b> GEN 4	3
Charging	4
Flexi Tips	6
Injection Technique with <b>DentalVibe®</b>	8
Caring for your <b>DentalVibe®</b>	10
Frequently Asked Questions	12
Warnings	14
Specifications	17
Obtaining Service	18
Intended Use	18
Warranty	19

## GET TO KNOW YOUR DENTALVIBE® GEN 4

**Learn the correct pressure that stimulates the sensory receptors by experiencing the DentalVibe® on yourself first.**

1. Place a new Flexi Tip onto a fully charged **DentalVibe®** and turn it on.
2. Rest the vibrating tip above your upper lip. Apply differing pressure to the tissue and you will notice that a light touch delivers the greatest amount of stimulation.

### EXPLANATION OF SYMBOLS



Consult User Manual



Electrical Hazard



Do Not Re-Use



Double Insulated



Biohazard after use



Manufacturer



Warning



European Conformity



Type B applied part



European Authorized Rep.

## CHARGING

DentalVibe® is equipped with a Nickel Metal Hydride (NiMH) rechargeable battery.



Only use provided power supply.

Model # GTM 41076-0615  
Input 100-240V, 50-60Hz, 0.5A  
Output 15V, 0.4A

1. Insert power supply cord into receptacle on charger base, plug power supply into an electrical outlet. Use international plug adaptors as needed.
2. Charge the **DentalVibe®** at least 15 hours before initial use.
3. After each patient use, place the **DentalVibe®** back in its charging base. Battery does not experience the “memory” effect.

### BLINKING LED INDICATOR

- **AMBER** off charger while button is pressed: *needs a new tip*
- **AMBER** off charger: *battery needs to be charged*
- **AMBER** on charger: *battery is charging*
- **GREEN** on charger: *ready for use*



*DentalVibe® needs to be placed on charger until light blinks green. It is not necessary to have a tip on the unit for charging. However, you must have a tip on the unit to turn it on.*



## FLEXI TIPS

### Installing and customizing a Flexi Tip for use

1. Remove a fresh Flexi Tip from its sealed bag in plain view of your patient.
2. While wearing gloves, align the arrow on the Flexi Tip with the arrow on the **DentalVibe®** unit. Push straight down until it snaps on securely (see illustrations).
3. Grip the prongs firmly with thumbs under bristles.
4. Bend prongs to straighten (if desired) and hold for a few seconds to set.



*Each Flexi Tip is programmed to be turned on and off a total of 6 times or continuously for a total of 6 minutes.*

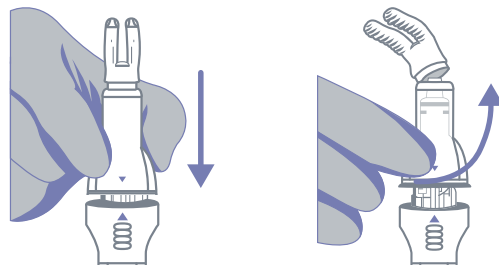
### Removing a Flexi Tip after use

1. While holding the **DentalVibe®** unit in one hand, grasp the clear plastic portion of the Flexi Tip with your other hand, rotate up to 180° counter-clockwise and lift up to remove. The tip will tear, preventing cross contamination. Do not turn past 180° or you may break the tip housing.
2. After each patient use, return the **DentalVibe®** unit back to its charging base.



*Flexi Tips are latex-free and safe with pacemaker/defibrillator when used normally in accordance with intended use.*

### INSTALLING / REMOVING FLEXI TIPS



### Infection-control protocol for Flexi Tips



DO NOT reuse the tip.

Flexi Tips must be disposed of after each patient use to prevent cross-contamination and ensure FDA compliance of infection-control protocols.

**These tips are porous, contain microfilaments, and will harbor blood, saliva, and bacteria.** Dispose used tips in red hazardous waste bags.



DO NOT RE-USE



BIOHAZARD AFTER USE

## INJECTION TECHNIQUE USING DENTALVIBE®

1. Activate the **DentalVibe®** by fully pressing the on/off button.
2. Introduce the vibration to your patient by gently touching the back of their hand or the outside of their cheek before placing it in the mouth.
3. Hold the **DentalVibe®** as a retractor in a similar fashion as you would hold a dental mirror. It is designed with the same angles for ease of use.
4. Position **DentalVibe® Flexi Tip** on the oral mucosa at the injection site.
5. Vibrate up to 30 seconds before inserting the needle because **the longer you vibrate, the less you feel the needle.**
6. Position the needle within 3 mm of one of the prongs and inject slowly. Do not inject directly between the two prongs.
7. Maintain contact and vibrate the tissue during the entire injection, plus 3 to 5 seconds after the injection.

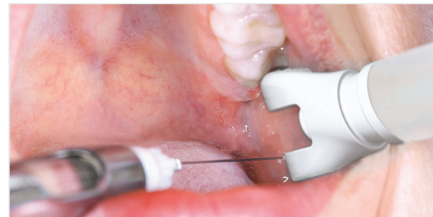
Scan the QR code to watch instructional videos



Infiltrations



Palatal



Mandibular Block



## CARING FOR YOUR DENTALVIBE®

### Cleaning instructions

- Wipe handle clean using a plastic safe, surface disinfectant wipe. Handle should be thoroughly wiped to ensure all exposed areas are sanitized. After thoroughly sanitizing, allow to air dry. Do NOT soak or immerse the **DentalVibe®** in any liquids.
- Remove the power cord plug from the electrical outlet before cleaning the charger.
- DO NOT place the **DentalVibe®** or Flexi Tip in an autoclave.
- DO NOT immerse the **DentalVibe®** or charger in water.

### PERMISSIBLE ENVIRONMENTAL CONDITIONS DURING NORMAL USE

	Temperature	Humidity	Barometric Pressure
<b>Operating:</b>	+18°C to +30°C	30-85% RH	100kpa-50kpa
<b>Storage:</b>	-20°C to +45°C	10-85% RH	100kpa-50kpa



DO NOT OPEN THE DENTALVIBE® OR CHARGING BASE.

The internal circuit boards are manufactured in a static-free environment. For service or battery replacement, please call 1-877-503-VIBE (8423) for an authorized Bing Innovations, LLC Service Center closest to you.



IMPORTANT

Periodically check the cord for damage. If cord is damaged, ship the charging unit to a Bing Innovations Service Center. A damaged or non-functioning unit should no longer be used.

DO NOT touch the power cord with wet hands as this can cause electric shock.

When unplugging, always hold the power plug instead of the cord.

DO NOT put metal objects such as coins or clips on the charger. This may generate heat, damaging the unit and heating the metal item, presenting potential burn hazards.

No user serviceable parts. DO NOT modify this equipment without authorization of the manufacturer. If equipment is modified, appropriate inspection and testing must be conducted to ensure continued safe use.

Batteries are not user serviceable.

Equipment protected from AC power by double insulation or reinforced insulation by use of the supplied power supply. Will not cause electromagnetic interference and complies with 601-1-2.

## FREQUENTLY ASKED QUESTIONS

### Why won't my DentalVibe® unit turn on? Why does the indicator flash amber?

Your DentalVibe® unit is equipped with Flexi Tip technology. After 6 on/off cycles or 6 cumulative minutes of run time, your **DentalVibe**'s indicator light will flash amber letting you know to replace the Flexi Tip. Your unit will stay off until the tip is replaced with a brand new Flexi Tip. Your **DentalVibe**® will not work without a Flexi Tip.

### How can I give a better block injection with my DentalVibe®?

- Locate the needle insertion point in your usual manner.
- Look at the pterygomandibular fold and palpate the inferior oblique ridge (about 5 mm laterally).
- Place the prongs of the vibrating Flexi Tip between them and press deeper, through the tissue, to vibrate the mandible for at least 30 seconds.
- Continue vibrating while inserting the needle between the prongs and deliver a full carpule of anesthetic over a period of 1 minute.
- Remove the needle and remove the **DentalVibe**®.
- Some dentists prefer to have their assistant hold the **DentalVibe**® in place while the dentist palpates the notch and gives the injection.









### Where can I get marketing materials?






Marketing materials may be obtained by contacting your **DentalVibe**® account manager at 877-503-8423.

### Can the DentalVibe® be used for pediatric patients?

Absolutely! Children love the **DentalVibe**®! Many pediatric dentists give the **DentalVibe**® nicknames such as “Mr. Vibes” or the “Tooth Tickler.” These same doctors report that appointments go much more smoothly when the patient is completely relaxed and no longer fearful.

## WARNINGS

-  Read all instructions before use.
-  DO NOT place the **DentalVibe**® handheld unit or charger in water or other liquid or allow it to get wet.
-  DO NOT reach for a charger that has fallen into water. Unplug immediately if still plugged in.
-  DO NOT place or store the **DentalVibe**® handheld unit or charger where it can fall or be pulled into a sink.
-  DO NOT use or place the **DentalVibe**® handheld unit near fire or other heat sources.
-  DO NOT disassemble or modify the battery in the **DentalVibe**® handheld unit.
-  DO NOT use any other charging system to charge the battery inside the **DentalVibe**® handheld unit.
-  Use this type B applied product only for its intended use as described in the manual. DO NOT use attachments or chargers not recommended by the manufacturer.

-  Position the charger so the power supply is easy to unplug.
-  NEVER insert any objects into any opening of the unit or charger base.
-  NEVER operate the product if it has a damaged cord or plug, not working properly, has been dropped, damaged or submerged into water. If any of these occur, contact a service center and return the product for examination and repair.
-  Use of the **DentalVibe**® adjacent to or stacked with other equipment should be avoided because it could result in improper operation. If such use is necessary, this equipment and the other equipment should be observed to verify that they are operating normally.
-  Portable RF communications equipment (including peripherals such as antenna cables and external antennas) should be used no closer than 30 cm (12 in) to any part of the **DentalVibe**®, including cables specified by the manufacturer. Otherwise, degradation of the performance of this equipment could result.





## SPECIFICATIONS

The **DentalVibe® GEN 4** meets the following EMC Standards and Test Levels:

CISPR 11 \* Group 1 Class B

IEC61000-3-2 \* Harmonics Class A

IEC61000-3-3 \* 4% dmax

IEC61000-4-2 \* ±8kV Contact, ±15kV Air

IEC61000-4-3 \* 3V/m (80-2700MHz)

Clause 8.10 Table 9 of IEC60601-1-2 ed4

IEC61000-4-4 \* ±2kV AC

IEC61000-4-5 \* ±1kV AC Mains

IEC61000-4-6 \* 3Vrms 150kHz-80MHz, 6Vrms at ISM Frequencies

IEC61000-4-8 \* 30A/m (50Hz and 60Hz)

IEC61000-4-11 \* 0%UT ½ Cycle, 0%UT 5 Cycles, 70%UT 25 Cycles



*During a 5 second complete loss of power, the DentalVibe® GEN 4 stops charging until power is restored.*

## OBTAINING SERVICE

Should this product require service, please call 1-877-503-VIBE (8423) to be referred to the authorized Bing Innovations, LLC Service Center closest to you.

## INTENDED USE

**DentalVibe®** is a vibrating retractor and is intended for use by dental professionals in a dental office setting. It has been carefully designed to offer your patients a more comfortable dental injection experience that is both safe and effective. It does not modify the tissue or impart energy and is not intended for therapeutic, diagnostic, or any other purpose.

- The use of the **DentalVibe®** varies between 30 and 120 seconds per application.
- Contraindication for use: DO NOT use in an area where an abscess is present.

## LIMITED 1-YEAR WARRANTY

Bing Innovations, LLC warrants this appliance to be free of defects in material and workmanship for a period of one year from the date of original purchase. If appliance exhibits such a defect, Bing Innovations, LLC will, at its option, repair or replace it without cost for parts and labor. The product must be shipped, prepaid and insured (recommended), to an authorized Bing Innovations, LLC Service Center. Proof of date of original purchase is required. The cost to ship the product to an authorized Service Center is the responsibility of the dental practice; the cost to return the product to the dental practice is the responsibility of Bing Innovations. Warranty does not cover finishes or normal wear, nor does it cover damage resulting from accident, misuse, dirt, water, tampering, unreasonable use, use of any tip other than those supplied by Bing Innovations, LLC or covering the tip with a plastic sleeve, service performed or attempted by unauthorized service agencies, failure to provide reasonable and necessary maintenance, including recharging, or units that have been modified or used for commercial purposes. ALL IMPLIED WARRANTIES, INCLUDING ANY IMPLIED WARRANTY OF MERCHANTABILITY OR FITNESS FOR ANY PARTICULAR PURPOSE, ARE LIMITED IN DURATION TO ONE YEAR FROM DATE OF ORIGINAL PURCHASE. IN NO EVENT WILL BING INNOVATIONS, LLC BE RESPONSIBLE FOR CONSEQUENTIAL DAMAGES RESULTING FROM THE USE OF THIS PRODUCT. Some states do not allow the exclusion or limitation of incidental or consequential damages, so the above limitation may not apply to you. This warranty gives you specific legal rights, and you may have other legal rights which vary from state to state.



 **BING INNOVATIONS, LLC**

7606 NW 6th Avenue, Boca Raton, FL 33487

**877-503-VIBE (8423) dentalvibe.com**

**info@dentalvibe.com**



European Authorized Representative (AR)



Mdi Europa GmbH  
Langenhagener Str. 71  
30855 Langenhagen

© 2023 Bing Innovations, LLC. All rights reserved. Under the copyright laws, this manual may not be copied, in whole or in part, without the express written consent of Bing Innovations, LLC. Every effort has been made to ensure that the information in this manual is accurate. Bing Innovations, LLC is not responsible for printing or clerical errors. This product may be covered by one or more U.S. patents or pending patent applications FDA Registered. Reverse engineering or disassembly is prohibited.

Model Name: DentalVibe® GEN 4  
Model # VIBE 4

**Manufactured in the USA**

REV 11 - 06.05.23